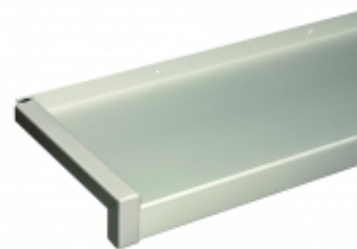


# Bordprofil SMART

Two-piece edge profile with sealing element and aluminium cover profile



## AREAS OF APPLICATION

Slide bearing profile, to construct a window sill connection in alsecco facade systems.  
Tested resistant to driving rain in the SMART window sill system.

## PRODUCT PROPERTIES

- Allows the application of the window sill system against the window frame as well as underlapping in the intended groove
- Tested for resistance to water penetration under driving rain up to 1950 Pa according to test report from the ift Rosenheim
- Corrosion resistant
- Can be supplied in projections from 50 to 500 mm
- Reliable incorporation of thermal length changes in the window sill

## TECHNICAL DATA

|                 |   |
|-----------------|---|
| Mortar category | Cover profile: Aluminium<br>Sealing element: Plastic with butyl sealant and moulded mounting aid.   |
| Design          | Width of the cover profile: 28 mm<br>height of the drip edge: 40 mm<br>slope: 5 degrees<br>Paired model as left side and right side edge profile  |
| Accessories     | SMART window sill<br>SMART butt connector<br>SMART jamb anchor<br>SMART joint sealing tape<br>ATPK sealing profile<br>2D joint sealing tape<br>noise suppression tape<br>window sill screws |

## APPLICATION INSTRUCTIONS

|                               |   |
|-------------------------------|---|
| Substrate pre-treatment       | Remove possible protective films and residue, which can reduce adhesiveness, so that the window sill has a clean and dry surface.   |
| Montage                       | <p>When using window sill systems, which are not resistant to water penetration under driving rain, additional sealing beneath the window sill is absolutely required. (Here, compare: e.g. leaflet "Recommendations for the installation/replacement of metal window sills (ETICS) from the Gütegemeinschaft Wärmedämmung von Fassaden e.V.)</p> <p>Remove the window sill protective film in the area of the edge profile to be installed. Unpack the profiles, which are packed in pairs and sort by left side and right side type.</p> <p>Remove the protective film on the sealing element from the butyl adhesive and position the sealing element on the window sill up to the stop of the mounting aid.</p> <p>Firmly press the sealing element onto the window sill and onto its rear raised edge without any flaws.</p> <p>After adequate pressing, remove the mounting aid by bending it upwards.</p> <p>Then, push the cover profile over the sealing element.</p> <p>After finishing renderwork on the reveal, remove the laterally attached protective film on the aluminium cover profile.</p> |
| Consumption                   | <p>In each case, 1 left and 1 right per window sill side.</p> <p>Determine precise material requirements on the respective object.</p>  |
| Information about the weather | <p>Temperatures below + 5 °C may not arise during application and drying.</p> <p>Do not apply in direct sunlight.</p> <p>A saltwater-proof powder coating is required in coastal regions up to a distance of 30 km to the sea. Damage to components caused by filiform corrosion can occur without this coating. This additional corrosion protection (pre-anodisation) is possible upon request.</p>   |

## STORAGE

Dry, cool.  
Protect against sunlight and temperatures > 35°C.

## PACKAGING INFORMATION

|                |  |
|----------------|--|
| Colour         | naturally anodised, white powder coated (RAL-9016)<br>Special colours, if required with glinting or metallic effect, possible upon request at an extra charge. |
| Packaging unit | In pairs   |
| Projections    | 50, 70, 90, 110, 130, 150, 165, 180, 195, 210, 225, 240, 260, 280, 300, 320, 340, 360, 380, 400, 420, 440, 460, 480, 500 mm                                    |

**OTHER INFORMATION****Transportation**

Not a hazardous material

**Construction details**

Please observe that when using window sill systems, which are not resistant to driving rain, it is imperative to use an additional sealing beneath the window sill. (Here, compare: e.g. leaflet "Recommendations for the installation/replacement of metal window sills (ETICS) from the Gütegemeinschaft Wärmedämmung von Fassaden e.V.")

**alsecco GmbH**  
Kupferstraße 50  
D-36208 Wildeck  
Phone 03 69 22 / 88-0  
Fax 03 69 22 / 88-330  
Internet: [www.alsecco.de](http://www.alsecco.de)

The above information is based on many years of experience and tests and is provided by us to the best of our knowledge. Such information applies in addition to our application guidelines. However, we cannot accept any responsibility for the correctness of our recommendations on account of wide variety of substrates and of on-site conditions and applications which are outside our control. Any recommendations provided by our employees and deviating from these documents must be given in writing. We reserve right to make any changes on account of technical progress or building regulations. Your technical advisor will be pleased to provide the relevant product data sheets.

