

# Kellerdeckendämmplatte Mineralschaum 042

Mineral foam insulation board for interior use



## AREAS OF APPLICATION

Non-combustible ceiling insulation board for purely bonded systems and bonded systems with supplementary mechanical fixings for insulating interior ceilings.

## PRODUCT PROPERTIES

- Area of application in accordance with DIN 4108-10: DI
- Fibre-free
- Dimensionally stable, mass-hydrophobic
- Mineral, biological harmless, completely recyclable
- Non-combustible
- Edges: blunt

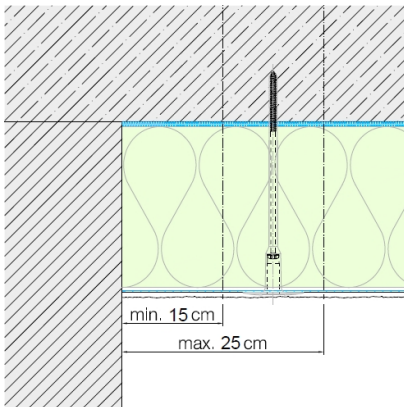
## TECHNICAL DATA

Fire behavior	A1 according to DIN EN 13501-1
Thermal conductivity $\lambda$	Rated value: 0,042 W/(mK) in accordance with DIN 4108-4
Dimensions	600 mm x 380 mm
Thickness	50 - 200 mm
Accessories	Without subsequent plaster coating: Deckendämmschraube (ceiling insulation screw) DDS-Z Decken-Dämmstoff-Teller (ceiling insulation disc) DDT With subsequent plaster coating: Alsifix Carbon
Density	85 - 110 kg/m <sup>3</sup>

**APPLICATION INSTRUCTIONS**

Substrate pre-treatment	Pretreat substrates according to the application instructions for the adhesive.
Application	<p>The adhesive is applied over the entire surface using the tooth-trowel bed method with Armatop Por. If smaller tolerances in the substrate have to be compensated by the adhesive bed, the buttering-floating method is recommended, in which the insulation board and the substrate are provided with adhesive. Install the insulation boards with slight pressure and at the same time pushing them sideways. Push the insulation boards tightly together. Leave the joints of the boards without adhesive.</p> <p>On load-bearing substrates, the Kellerdeckendämmplatte Mineralschaum 042 does not require any supplementary mechanical fixings up to an insulation thickness of 140 mm.</p> <p>From an insulation thickness of 160 mm, the supplementary mechanical fixings with approval (AbZ) Deckendämmschraube DDS-Z and Dämmstoff-Teller DDT (1 dowel/board) are required.</p> <p>If higher optical demands are placed on the finished surface, the Kellerdecken-dämmplatte Mineralschaum 042 can be provided with a plaster coating consisting of base coat Armatop Por and finishing coat Alsilite T-, F or R-Aero. If the insulation boards are sanded, e.g. in the case of height offset, they must be dedusted before plastering and primed with Imprägniergrund Si.</p> <p>For subsequent plaster coating, the ceiling insulation system must always be fixed with the approved (AbZ) dowel Alsifix Carbon (1 dowel/board), regardless of the insulation thickness. In addition, the ceiling insulation system must be dowelled through the glas fiber mesh in the edge area (e.g. in the case of adjacent walls or generally at free edges). For this purpose, provide a linear dowelling of 2 dowels/m at a distance of approx. 15 - 25 cm from the system edge.</p>
Weather conditions	Ambient and substrate temperatures must not drop below 5 °C or exceed 30 °C during the application and drying phases. In this context please refer to the general technical commentary to DIN 18345 section 3.1.3 on unsuitable climatic conditions.
Information	Depending on the material, it may be the case that the Kellerdeckendämmplatte Mineralschaum 042 has a tendency to trickle if the surface is not coated. To prevent this, we recommend to prime the ceiling insulation system with the primer Imprägniergrund Si or to apply a thin layer of Armatop Por.

## SKETCHES



## STORAGE

Dry, protected against moisture.

## PACKAGING INFORMATION

Colour White

## OTHER INFORMATION

Transportation Not a hazardous material  
Waste code 17 01 01 (class II waste disposal, household and construction waste disposal)

**alsecco GmbH**  
Kupferstraße 50  
D-36208 Wildeck  
Phone 03 69 22 / 88-0  
Fax 03 69 22 / 88-330  
Internet: [www.alsecco.de](http://www.alsecco.de)

The above information is based on many years of experience and tests and is provided by us to the best of our knowledge. Such information applies in addition to our application guidelines. However, we cannot accept any responsibility for the correctness of our recommendations on account of wide variety of substrates and of on-site conditions and applications which are outside our control. Any recommendations provided by our employees and deviating from these documents must be given in writing. We reserve right to make any changes on account of technical progress or building regulations. Your technical advisor will be pleased to provide the relevant product data sheets.